



The NEW World
of LOVE...



The world doesn't need
more accumulation.

What the world truly needs:
**a new way of sharing
existing wealth, transforming it into
a kind of global legacy**
for a new era built on love...

...along with more inspired and enlightened
peacemakers, healers, visionaries,
and bold creators of every kind.





The CALL
to ALL OF US...



True love, joy, and a sense of abundance, along with respectful and dignified treatment, have been stripped away from people, especially women and children, animals, and mother Earth itself, leading to situations like these becoming increasingly common...



This must come to an end now!





A world rooted in natural abundance and love for all, where the feminine principle - the life-giving primal force and the pure, loving heart - is once again free to flow and express itself, guiding us all back to our original, luminous essence. This is the mission...





THIS



must be our

MOTIVATION...





FOUNDATION

inviva

SOURCE OF LIGHT



Two SPIRITUAL
visionaries & pioneers...



FOUNDATION

inviva

SOURCE OF LIGHT



Viktoria Ulrike Brändle

- Born** : February 1, 1967
- Zodiac** : Aquarius
- Ascendant** : Aquarius
- Life Path No** : 8
- Highest value** : unconditional love and spirituality
- Strength** : creative force rooted in unconditional love

Viktoria Brändle... Ambassador of Love...

Viktoria Brändle is a forward-thinking, innovative, spiritually grounded entrepreneur with a strong sense of connection to the higher realm. Her purpose is to serve as an **“ambassador of love”** a mission that extends to all living beings on Earth as well as the planet itself.

She recognizes that the creative power of the feminine is ready to be redefined and repositioned. In her view, unconditional love - often traditionally associated with women in a worldly context - is meant to return to its full, original strength. This perspective is reflected in her message: **“EMPOWER your FEMININE”**

Her focus on the nurturing feminine principle is deeply intentional. It is driven by the vision of bringing more authentic, pure love into a world where it is often lacking today, helping to establish a **“New World of Love”** as a lived reality for all forms of life.





FOUNDATION

inviva

SOURCE OF LIGHT



Ralf Dickscheid

- Born** : February 13, 1964
Zodiac : Aquarius
Ascendant : Capricorn
Life Path No : 8
Highest value : creativity and spirituality
Strength : creating from a light-aligned masculine energy.

Ralf Dickscheid... Project Developer with Heart...

Ralf Dickscheid is a multi-entrepreneur and innovator whose sense of what is “possible or impossible” appears virtually limitless, much like his creative flow, which he attributes to a deep connection with the spiritual realm.

Shaped by his personal life journey, he began taking responsibility for his own path at the age of 14. Since then, he has built a broad and diverse foundation of expertise, accumulating an exceptional range of experience across multiple industries - both in depth and breadth.

Among close friends, he is often described as a bridge-builder toward a “**New World of Love**” as he deeply understands the mechanisms of the existing world through knowledge and experience, while remaining fully aligned in action and intention with a forward-looking vision of a more loving future.

Ralf Dickscheid has long recognized that a fundamental shift in thinking, behavior, and collaboration is required to create lasting, meaningful change in the world. He stands ready to dedicate his full potential in service of humanity.





FOUNDATION

inviva

SOURCE OF LIGHT



The VALUES

we LIVE by...

Our character ...

Qualities



We are a group of motivated, value-driven individuals with extensive expertise and capabilities, focused on restoring balance in living spaces and quality of life for people, animals, and plants through sustainable, positive impact, always with an awareness of the universal interconnectedness of all things.



We bring both experience and intuition to the table, enabling us to develop, take over, and restructure projects in alignment with the natural universal principle of growth and evolution - even when the challenges are complex and demanding.



We operate strictly in alignment with social, moral, and spiritual values, guided by the principles of a new world rooted in love and the creative wisdom of the feminine. Our focus is always on embodying love and joy and bringing them into the world.



What we commit to... Qualities



Truth and clarity, as well as transparency in our path and in everything we do.



We are driven to give our very best and to improve a little every day. Not out of obligation, but because it brings us joy to walk the path of our purpose and help build a new world rooted in love.



Intelligent, sustainable values are created to last across generations. The values brought into the world through INVIVA are intended for humanity as a whole, as INVIVA represents a creative source for the new world of love.



A heart-shaped globe of the Earth, showing continents and oceans, set against a dark blue background. The globe is slightly tilted and has a soft glow around it.

The CORE CHALLENGES
that need to be addressed...

Human **separation** can be observed across nearly all areas of life, with many of its lingering effects from past darker eras still clearly visible in 2026.

This reality, along with the reduction of the feminine primal force, the family structure, and ultimately authentic love to a minimum, **calls for profound and meaningful change.**

The **concept of universal human consciousness** is framed here in relation to three key aspects of the human body: the pituitary gland, the cells, and the so-called fifth chamber of the heart.

Various external influences, including nutrition, water quality, media, radiation, and others, are described as limiting access to these levels of awareness. Sustainable transformation of the world is only seen as possible when human consciousness is expanded and opened. As a result, **interconnected, system-based approaches** are required to address this complex challenge.

True and unconditional love is aligned with our essential, original nature. In this sense, light and love are described as the most powerful energies in the universe.

Modern societies, particularly in industrialized nations, are portrayed as being centered around performance, consumption, and limiting belief systems, while poverty and hunger in developing regions further pull collective awareness away from love.

Since energy follows attention, a fundamental shift back to our original state - love - is seen as essential. Within this perspective, nothing appears more important than the emergence of a **“New World of Love”**



FOUNDATION

inviva

SOURCE OF LIGHT

Origin and Meaning of the Name:

IN : = Intelligent

VI : = Vitality

VA : = Value

IN : = in the sense of being alive

VIVA : = life



FOUNDATION

inviva

SOURCE OF LIGHT

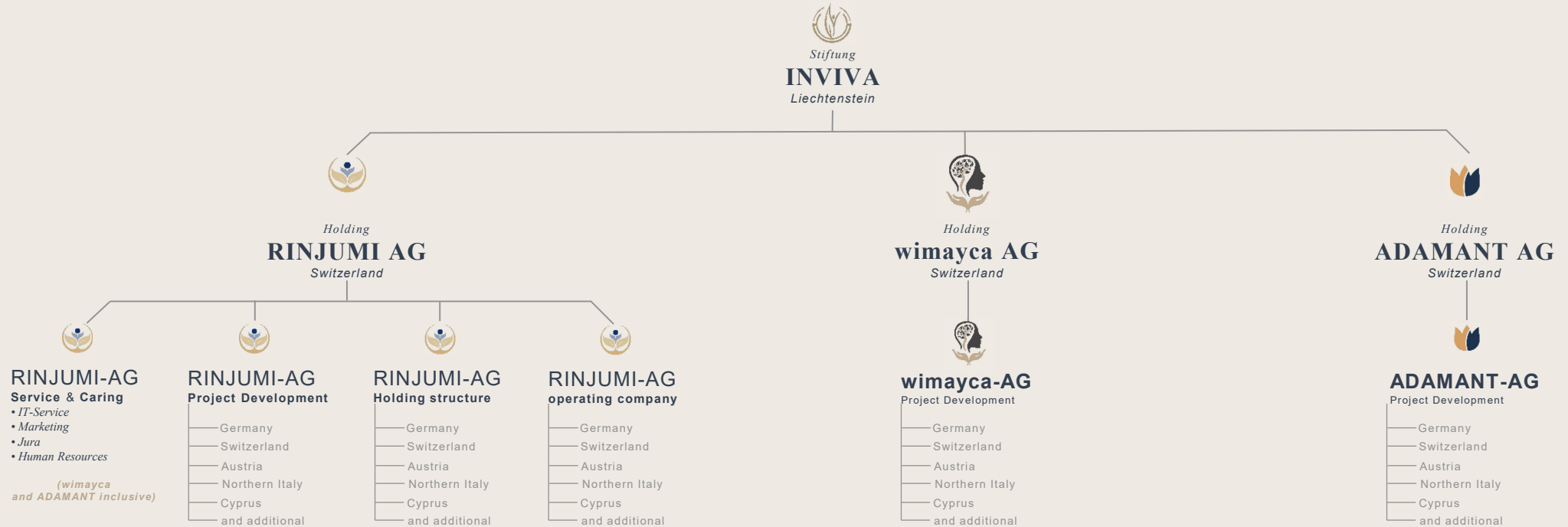
Origin and Meaning of the Logo:

The logo symbolizes Mother Earth opening up as humanity reconnects with nature, allowing its original essence and deeper sense of self to take the lead once again...





STRUCTURE
FOUNDATION...



The corporate structure is designed to ensure feasibility within the practical, physical world. However, in day-to-day operations and decision-making, each company is guided and built in alignment with the principles of the “New World of Love” - with particular emphasis on the people who contribute to this vision, regardless of their specific role or function in the process of building it.



FOUNDATION

inviva

SOURCE OF LIGHT

Vision Humanitarian

All our projects are created from a place of deep sincerity, compassion, and a genuinely open heart.

The process of bringing ideas into material form is guided by creative and innovative expertise, carried by a sense of higher purpose and generative force.

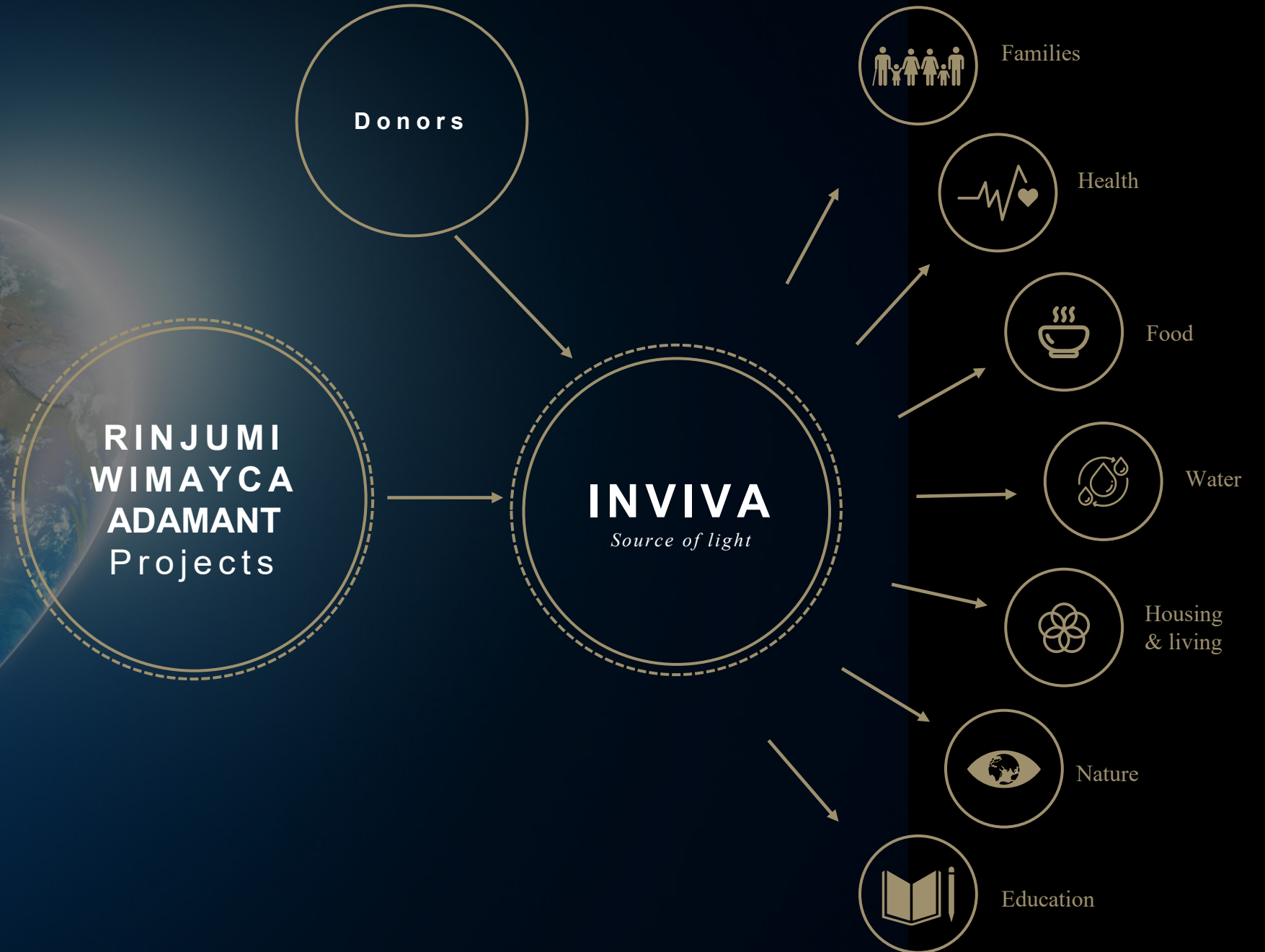
Profits generated through operational subsidiaries of xxx will be allocated as follows: 50% will flow into INVIVA, along with 100% of any additional funds received directly by the foundation's founder.

Our support is grounded in a deeper principle:

empowerment through self-sufficiency. Not rescue, but

amends

this is the driving force behind
INVIVA...



Meaning of the Foundation:

„**INVIVA**“ as a foundation carrying the addition “**Source of Light**” - understood equally as a “**Source of Love**” - is intended to represent a sacred source. In this context, it is essential to understand the deeper meaning behind the words “**holy**” and “**source**.”

INVIVA clearly distances itself from religions, sects, or any organizations that do not place the well-being of all people, animals, and Mother Earth at the focus of their mission.

The term “**holy**” is understood by **INVIVA** through its original linguistic root connected to “**healing**”. As such, **INVIVA** is deeply committed to supporting healing for all living beings and for the Earth itself. On every level: physical, mental, emotional, spiritual, and material.

The word “**source**” is seen as a reflection of the belief that everything created through **INVIVA** should emerge from a deep understanding of natural interconnectedness, guided by love and joy.

Created by people, for people - as well as for animals and Mother Earth!

Core Philosophy of the Foundation:

All projects brought into the world through INVIVA and its operating channels (RINJUMI; WIMAYCA; ADAMANT) are rooted in a complete and authentic understanding of the name „INVIVA“.

- IN** = **In**_telligence represents the masculine principle, the mind and the power to create.
- VI** = **Vi**_tality represents the feminine principle - the heart, vitality, and the nurturing creative force.
- VA** = **Va**_lue represents true spiritual values.

It is a clear message that the „**VI**“ as a symbol of the feminine, stands at the center of the word „**INVIVA**“. The **CENTER** represents the **creative force** and the all-encompassing, unconditional love, the **mother soil** from which everything brought into the New World of Love through **INVIVA** can grow and emerge!

INVIVA is neither a tax-driven model nor a traditional charitable foundation - approaches often associated with a rescue mentality and a mindset rooted in scarcity. Instead, **INVIVA** is a foundation dedicated to **helping build a New World of Love...**

*„...through the **intentional redistribution of excess and non-essential wealth.**“*



PROJECTS

for the Future...

Core Principle for Foundation Projects:

An initial focus of **INVIVA** is on projects that support the expansion of consciousness and deepen awareness of what the world urgently needs today.

INVIVA serves as a platform for inspired and innovative peacemakers, healers, visionaries, creators, and purpose-driven initiatives aligned with the principle of interconnectedness. In this way, **INVIVA** becomes an **important foundation** for building a **New World of Love**.

For many **INVIVA-Projects**, financial returns and business optimization are not the primary drivers. At the same time, all entrusted assets are managed with responsibility, integrity, and long-term care.



Historically, most projects have been guided by conventional business principles focused on achieving maximum return with minimal effort, a logic that also forms the foundation of shareholder value thinking. Over time, this framework has contributed to a growing imbalance in wealth distribution.

There is now an urgent need for a conscious reassessment and a responsible return of non-essential assets into society. This is only possible when individuals with significant wealth find the courage and clarity to recognize this reality and choose to contribute part of their surplus capital as **a personal statement, a living legacy in support of a necessary turning point.**

Over the past years, together with international partners and networks, we have developed forward-looking projects and concepts that are **essential for building a New World of Love and for addressing both current and emerging challenges.**

We are prepared, within the context of a redistribution of resources, to dedicate the remainder of our lives to this mission in love and joy, so that children and future generations may once again experience a **planet of love, joy, and prosperity,** aligned with the universal **principle of abundance.**



The New World of Love is not an esoteric project or merely an idea. Rather, this expression reflects the understanding that unconditional, **authentic love** represents the highest frequency in the universe.

The key challenge lies in humanity's need to evolve toward a higher frequency state, as described in quantum physics perspectives, so that the natural consciousness within us becomes accessible again. In this state, many destructive patterns such as greed, power seeking, envy, and fear are naturally replaced by joy, contentment, trust, courage, and humanity.

For this reason, alongside the development of essential infrastructure and operational projects for the New World of Love, **it is crucial to focus on three core pillars:**

1. Support for all forms of consciousness development, including mental clarity, physical movement, spiritual connection, and self awareness
2. Healthy nutrition free from toxins and harmful substances, with high energetic quality
3. A fundamental shift in media consumption, including television, mobile devices, social media, and mass events

Only through strong and consistent support of these three core pillars can humanity begin to understand true interdependence. Only then becomes an intrinsic and respectful relationship with fellow humans, animals, and nature possible again.

A heart-shaped globe of Earth is centered on the Atlantic Ocean, showing the Americas on the left and Europe and Africa on the right. The globe is set against a dark blue background with a subtle light flare behind it. The text "PROJECTS" is overlaid on the left side of the heart, and "KEY INFORMATION..." is overlaid on the right side.

PROJECTS

KEY INFORMATION...

The Challenge:

It is unrealistic to assume that a “**New World of Love**” can emerge without **building a bridge from the old world**.

In practical terms, this bridge represents a complex, multi layered challenge, illustrated by the following key points:

- In the first two to three years, the starting point of all projects is the existing system, while introducing innovative and future oriented structures
- Projects aligned with the New World of Love, such as nonprofit initiatives, must be designed in a way that allows them to operate within existing legal, tax, and regulatory frameworks
- Key roles within these projects should primarily be filled by conscious and aware individuals, enabling broader teams to grow into this essential mindset over time

Project Transformation I:

Projects in the old world have traditionally been planned in a highly structured and standardized way, based on defined frameworks such as:

- Planning including visualizations and 3D models
- Due diligence, unique selling propositions, track record, and feasibility studies
- Business plan scenarios including worst case, mid case, best case, and cash flow projections
- and similar analytical methods

In execution, however, priorities often shifted toward factors such as:

- Time efficiency, often without sufficient regard for people and nature
- Strict controlling mechanisms
- Profit and return over quality and human well being
- and related performance driven objectives

Projects in the New World of Love are instead built on **joy, love, and trust**. Time is understood as something that follows a **natural rhythm**, with a focus on **responsible action** and a **balanced use of resources**.

Project Transformation II:

All projects funded and supported by **INVIVA**, whether directly or through a foundation-owned company, must meet the principles of wholeness and ensure long-term sustainability. It is therefore essential that every project operates in alignment with love, joy, clarity, truth, and a healthy economic balance.

This economic balance can be understood from multiple perspectives. Non profit projects are, by definition, financially loss making, but when supported by highly profitable ventures, both sides can be brought into balance through cross subsidization in a simplified view.

When projects are presented to the **INVIVA** network, they are categorized as follows:

1. Suitable for adoption, as they are holistic and sustainable and aligned with the New World of Love
2. Of interest, but requiring adaptation for various reasons
3. Not suitable for adoption, as they do not meet holistic or sustainable criteria

Projects in category 2 are transformed in a way that preserves their original intention as much as possible while bringing them into alignment with the overall framework.

Projects by prioritization:

Nach Marke & Gruppe			Nach New World Priorität (5D)			Nach Umsatz und Rendite (3D)		
1	RINJUMI	RINJUMI vitality CLINIC 4s	1	RINJUMI	Non Profit Projects	1	RINJUMI	Multi Element
2	RINJUMI	Therapie Oasen	2	ADAMANT	Awarness Academy	2	RINJUMI	Sano Vita
3	RINJUMI	Start-Up Campus	3	WIMAYCA	Feminin Oasis	3	RINJUMI	Sano Terra
4	RINJUMI	Non Profit Projects	4	RINJUMI	Therapie Oasen	4	RINJUMI	RINJUMI vitality CLINIC 4s
5	RINJUMI	Multi Element	5	WIMAYCA	Kids Campus	5	RINJUMI	Therapie Oasen
6	RINJUMI	Clean Water	6	ADAMANT	Junior Campus	6	RINJUMI	Aqua Ponic
7	RINJUMI	Aqua Ponic	7	WIMAYCA	Maskulin Campus	7	RINJUMI	Clean Water
8	RINJUMI	Sano Vita	8	WIMAYCA	Couples Campus	8	WIMAYCA	Feminin Oasis
9	RINJUMI	Sano Terra	9	RINJUMI	RINJUMI vitality CLINIC 4s	9	WIMAYCA	Maskulin Campus
10	WIMAYCA	Feminin Oasis	10	RINJUMI	Clean Water	10	WIMAYCA	Couples Campus
11	WIMAYCA	Maskulin Campus	11	RINJUMI	Aqua Ponic	11	WIMAYCA	Kids Campus
12	WIMAYCA	Couples Campus	12	RINJUMI	Multi Element	12	ADAMANT	Junior Campus
13	WIMAYCA	Kids Campus	13	RINJUMI	Sano Vita	13	RINJUMI	Start-Up Campus
14	ADAMANT	Junior Campus	14	RINJUMI	Sano Terra	14	ADAMANT	Start-Up Campus
15	ADAMANT	Start-Up Campus	15	RINJUMI	Start-Up Campus	15	ADAMANT	Awarness Academy
16	ADAMANT	Awarness Academy	16	ADAMANT	Start-Up Campus	16	RINJUMI	Non Profit Projects

The projects listed represent the intended initial launch projects from a general perspective, as a more detailed view would reveal additional subprojects and layers.

This overview is meant to illustrate how significantly priorities can shift when the order of importance is changed.

It becomes clear that prioritization within a purely 3D framework is almost entirely contrary to the principles of the New World of Love.

3D represents „old world“
5D represents "New World of Love"

Wealth Redistribution I:

Money in its current form as fiat currency is one of the most powerful and at the same time most influential energetic systems on this planet. The negative manifestations associated with money, such as power imbalances, greed, war, and corruption, **must no longer be accepted**.

Since the New World of Love first needs to be built while still coexisting on the same planet as the old world, it is essential to act with a high level of responsibility. Any entrusted assets must therefore be managed in accordance with the foundation's principles of wholeness and sustainability.

In simple terms, from a polarity perspective, money has two aspects:

1. The dark side, associated with power, greed, war, and corruption
2. The light side, associated with life energy, joy, prosperity, and well being

INVIVA will exclusively use and invest entrusted assets in alignment with the light side, as these resources are regarded as a form of living **legacy entrusted** by individuals and institutions.

Wealth Redistribution II:

History shows that there have always been individuals deeply committed to humanity who have made a lasting impact on the world.

INVIVA is a large-scale initiative designed to leave a **meaningful legacy** for those who are ready to step forward with courage and contribute to this **New World of Love**.

Every pioneer knows how demanding the path of early adoption can be.

The journey becomes easier and more natural when people walk it together, united in courage, motivation, generosity, and confidence in their own convictions.

A heart-shaped globe of the Earth, showing continents and oceans, set against a dark blue background. The globe is tilted and appears to be glowing from the right side.

The INITIAL REGIONS

For the projects...

Why the initial focus is on the German speaking region:

The planned launch projects are located almost entirely within the German speaking region. with the exception of Cyprus and Northern Italy. Projects located outside this region (*Cyprus and northern Italy*) serve primarily to

„raising consciousness toward a New World of Love“

In recent years, Europe, and in particular Germany, Austria, and Switzerland, has increasingly been shaped by geopolitical influences and systemic frameworks characterized by cost pressure, bureaucracy, regulation, various forms of separation, as well as concerns related to food systems and media narratives. As a result, overall progress and prosperity have been significantly constrained.

This development is not viewed as coincidental, as these regions also hold a high concentration of visionaries and creators whose potential has so far remained largely underutilized.

By initiating projects in these core regions, it becomes possible to implement creative and unconventional solutions within a relatively short time frame, thereby significantly elevating awareness and laying the foundation for a **New World of Love**.



PROJECTS

we stand for...



RINJUMI



RINJUMI

Origin and Meaning of the Name:

Ri : = re
nju : = new
mi : = me



Origin of the Meaningful Logo:



- Vision**
Open and creating connection to the higher realm
- Core**
Natural, human, empathetic
- Commitment in the sense of "promise"**
To live in a more vital, conscious, and joyful way, rooted in love.
- Character**
Holistic, impactful, and inspiring.
- Position**
Unique, consistent, and impactful integrative concepts, grounded in values and guided by a spiritual foundation.



Meaning of RINJUMI:

On the one hand, the name „**RINJUMI**“ represents **a withdrawal from today’s media driven societal overload**, a form of **DETOXING** for the **SOUL**. On the other hand, it also stands for everything required to lovingly and sustainably build a new world.

This begins with how we welcome children into life on Mother Earth and continues with how we support these pure souls through caring guidance, helping them fulfil their natural, joyful purpose, free from limiting systems.

It is not the children who are our future, but **rather we**, the generation of parents and grandparents, **who shape the future for them through** what we create and provide today.

Another key focus lies in living environments and our relationship with animals, including their natural capacity to support human healing.

Mother Earth herself will also receive meaningful support in the restoration of degraded soils and the preservation of biodiversity.





he separation of the feminine and masculine, both internally and externally, the fragmentation of families, the isolation of older people from society through institutional care, and the division of cultures in many different forms represent another core issue addressed by the **RINJUMI CONCEPT**, as these areas also require urgent transformation.

We hold the view that there are no single rooms in heaven, as human beings in their natural and loving form are fundamentally social beings.

When genuine values such as the following are lived within a family, a community, or a workplace:

- Love
- Joy
- Respect
- Recognition and appreciation
- Gratitude

the respective community becomes an amplifier of energy.

RINJUMI is a “**WE CONCEPT**“ with a strong focus on **renewal and humanity**.





Projects by RINJUMI:

„RINJUMI“ represents projects created from the heart, by people for people, while taking into account all elements of existence, including Mother Earth, living beings, animals, and natural habitats. Love, joy, health, and overall well being are among the core parameters that form the foundation of every project.

„RINJUMI“ is structured into four main areas:

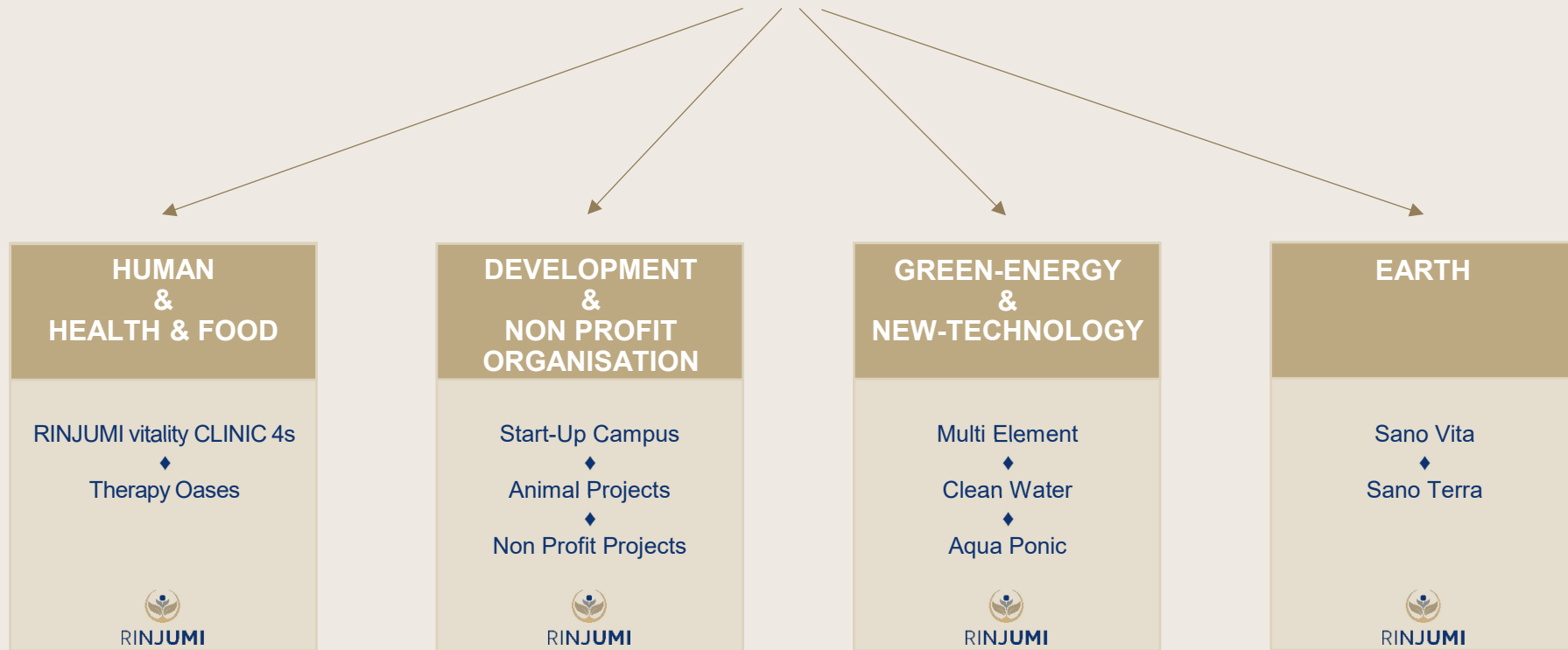
- ✓ **HUMAN & HEALTH & FOOD**
- ✓ **GREEN-ENERGY & NEW-TECHNOLOGY**
- ✓ **DEVELOPMENT & NON-PROFIT ORGANISATION**
- ✓ **EARTH**

All of the above areas reflect the principle of natural interdependence and are aligned with the ancient Mayan understanding, which plays a guiding role across all domains.

"In our every deliberation, we must consider the impact of our decisions on the next seven generations."

(Ancient Mayan principle)







w i m a y c a

Empower your real, spiritual feminine...



w i m a y c a

Origin and Meaning of the Name:

wi	: = I will
may	: = I may
ca	: = I can



Origin of the Meaningful Logo:



Vision

The mind is guided by the intuitive, pure, and loving heart.

Core

The creative force of the feminine

Character

Unconditional love

Position

The hands of pure femininity
cleansed, loving, nurturing, and connected...



w i m a y c a

Meaning of WIMAYCA:

The Earth is naturally connected to our human existence and essence. From this perspective, we are loving beings with an intrinsic soul force that nourishes, supports, and fills us with wisdom throughout our lives.

When life becomes overly focused on the external world, this connection to our original source can be lost. We begin to feel separated, powerless, and without inner guidance.

WIMAYCA is a path dedicated to guiding women back into their feminine core strength and authentic, original femininity, expressed in the sense of **“EMPOWER YOUR FEMININE.”**

WIMAYCA is based on the philosophy and intention of leading women back into the pure magic of self love, thereby reopening the door to lived, unconditional love.

„If love prevails on Earth, all laws will become unnecessary.“
(Aristoteles)





wimayca

The concept of WIMAYCA:

The „**WIMAYCA CONCEPT**“ emerged from the belief that today’s world in 2026 more than ever requires the reactivation of the feminine core force of unconditional love as a guiding principle.

The feminine, understood as the loving and creative force, energetically guides the masculine in the creation of new living spaces and sustainable projects, enabling humanity to return to its natural state of interdependence and to transform the world **into a world of love**.

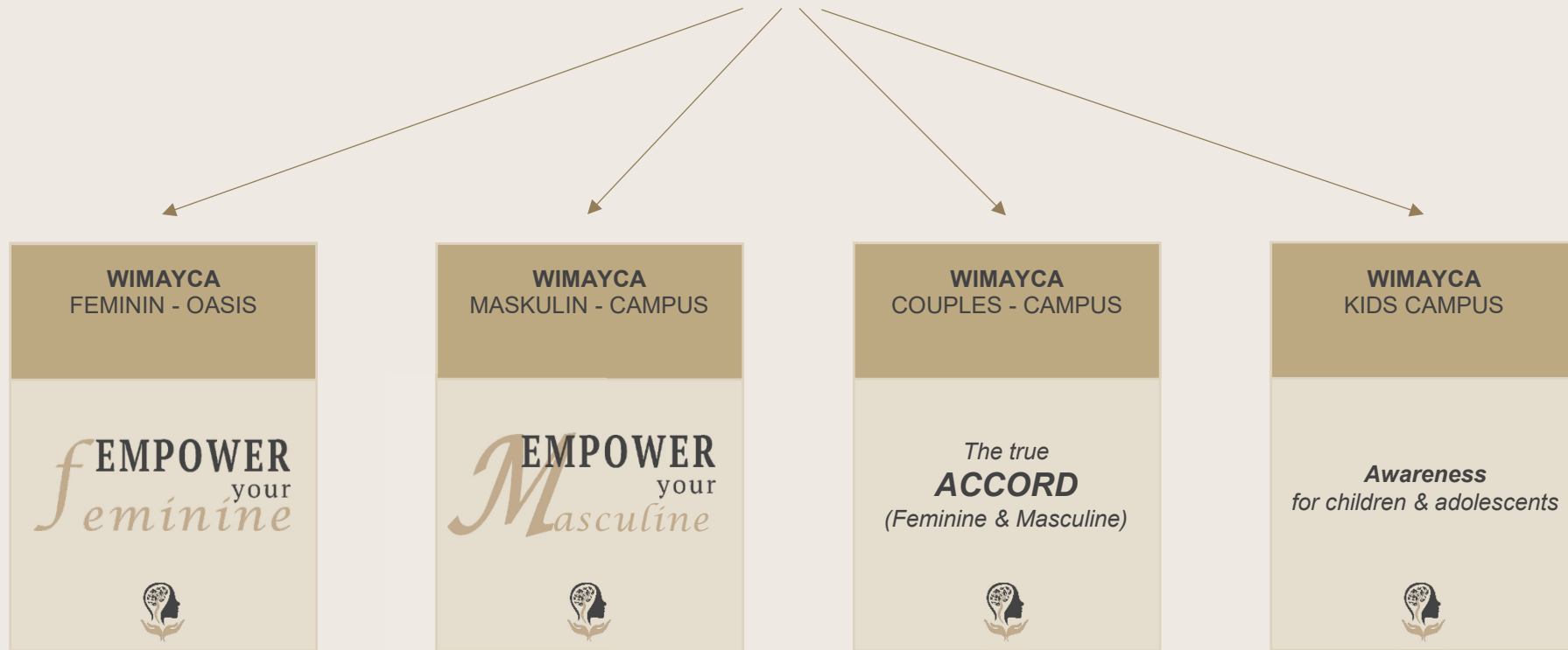
Moving away from concepts such as “feminism” and perceived independence, the „**WIMAYCA CONCEPT**“ concept supports women in rediscovering who they truly are, why they are here, and how to activate their inner **power by reconnecting with the nurturing principle**.

At the same time, the „**WIMAYCA CONCEPT**“ also helps men understand the true nature of masculine strength and how this form of power can be expressed in a respectful and honorable way, in contrast to patterns of patriarchy and narcissism.





wimayca



The active feminine
...as the fertile ground for a new world...





ADAMANT



ADAMANT

Origin and Meaning of the Name:

ADAM Kadmon : The original image of humanity, still carrying all natural values within.

Ad amant : It is about love. We love what we do.



Origin of the Meaningful Logo:



Interpretation 1

refers to a synonym for a process of regeneration. What has been divided is brought back together into a whole, with the aim of restoring harmony between body, mind, and soul; ESPECIALLY IN CHILDREN...

Interpretation 2

It symbolizes a shield. It conveys protection, safety, and a sense of security and comfort. In particular, children need this protection, as do people who have reached their limits due to sensory overload in modern society.

Interpretation 3

It symbolizes a process of blossoming. When body, mind, and soul are in harmony, we naturally come into our full strength and meet life again with lightness and the joy of a flower in bloom. (Joy is love in motion.)



Meaning of ADAMANT:

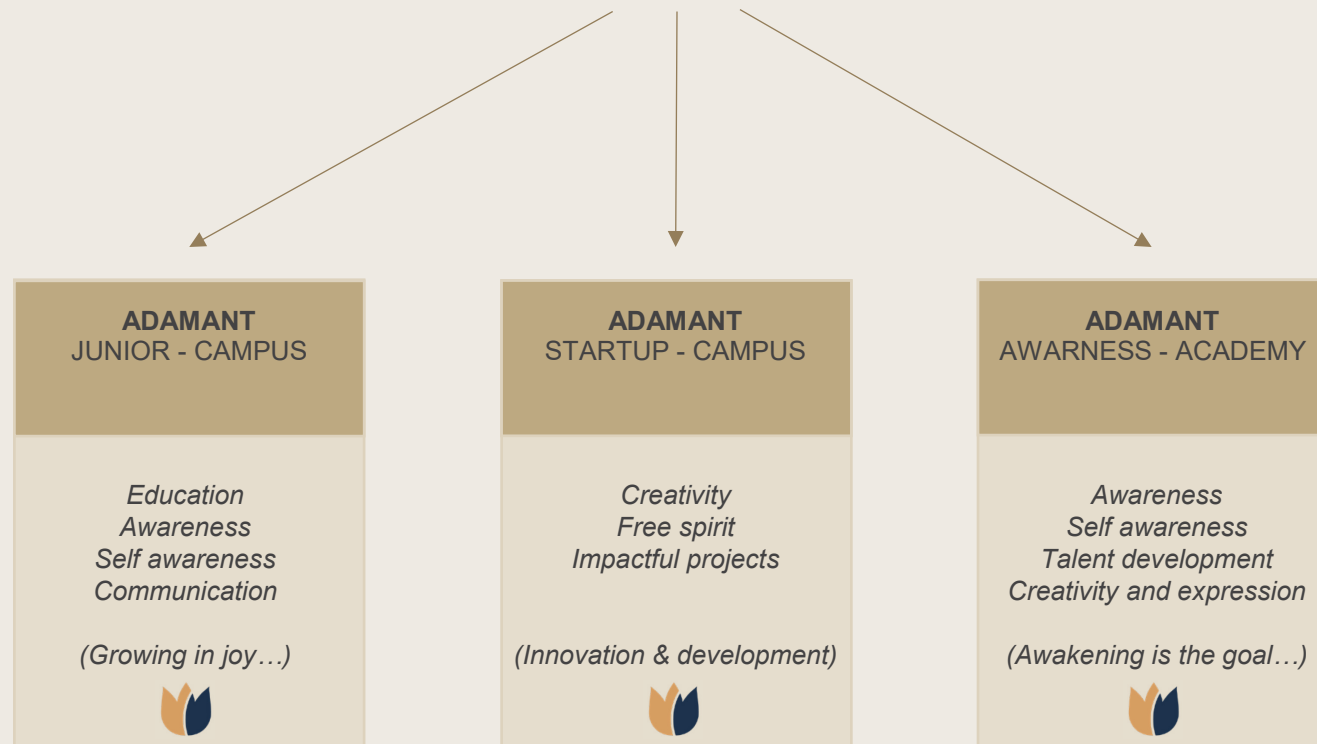
The focus of **ADAMANT** is clearly on **children and adolescents**, the future souls of the New World of Love.

While the **RINJUMI CONCEPT** also takes birth environments into account, **ADAMANT** is specifically designed to recognize and support the different developmental stages of children and young people in a targeted and meaningful way. This includes unique educational systems that have already been successfully tested in practice.

ADAMANT is based on the belief that all children inherently bring a high level of natural talent into the world, as well as the abilities their souls need for their individual purpose. In addition, children still possess many capacities that are often diminished in adults over time, such as heightened intuitive and perceptive abilities.

ADAMANT aims to rediscover and nurture these gifts and talents together with children in a playful and joyful way. **ADAMANT** strengthens the strengths of the next generation of society.





THE TRUE JOY OF INNER GROWTH...





FOUNDATION

inviva

SOURCE OF LIGHT



FOUNDATION

inviva

SOURCE OF LIGHT



The NEW World
of LOVE...



The world doesn't need
more accumulation.

What the world truly needs:
**a new way of sharing
existing wealth, transforming it into
a kind of global legacy**
for a new era built on love...

...along with more inspired and enlightened
peacemakers, healers, visionaries,
and bold creators of every kind.





The CALL
to ALL OF US...



True love, joy, and a sense of abundance, along with respectful and dignified treatment, have been stripped away from people, especially women and children, animals, and mother Earth itself, leading to situations like these becoming increasingly common...



This must come to an end now!





A world rooted in natural abundance and love for all, where the feminine principle - the life-giving primal force and the pure, loving heart - is once again free to flow and express itself, guiding us all back to our original, luminous essence. This is the mission...





THIS



must be our

MOTIVATION...





FOUNDATION

inviva

SOURCE OF LIGHT

A heart-shaped globe of the Earth, showing continents and oceans, set against a dark blue background. The globe is centered on the Atlantic Ocean, with North and South America on the left and Europe and Africa on the right. The text is overlaid on the right side of the globe.

Two SPIRITUAL
visionaries & pioneers...



FOUNDATION

inviva

SOURCE OF LIGHT



Viktoria Ulrike Brändle

- Born** : February 1, 1967
- Zodiac** : Aquarius
- Ascendant** : Aquarius
- Life Path No** : 8
- Highest value** : unconditional love and spirituality
- Strength** : creative force rooted in unconditional love

Viktoria Brändle... Ambassador of Love...

Viktoria Brändle is a forward-thinking, innovative, spiritually grounded entrepreneur with a strong sense of connection to the higher realm. Her purpose is to serve as an **“ambassador of love”** a mission that extends to all living beings on Earth as well as the planet itself.

She recognizes that the creative power of the feminine is ready to be redefined and repositioned. In her view, unconditional love - often traditionally associated with women in a worldly context - is meant to return to its full, original strength. This perspective is reflected in her message: **“EMPOWER your FEMININE”**

Her focus on the nurturing feminine principle is deeply intentional. It is driven by the vision of bringing more authentic, pure love into a world where it is often lacking today, helping to establish a **“New World of Love”** as a lived reality for all forms of life.





FOUNDATION

inviva

SOURCE OF LIGHT



Ralf Dickscheid

- Born** : February 13, 1964
- Zodiac** : Aquarius
- Ascendant** : Capricorn
- Life Path No** : 8
- Highest value** : creativity and spirituality
- Strength** : creating from a light-aligned masculine energy.

Ralf Dickscheid... Project Developer with Heart...

Ralf Dickscheid is a multi-entrepreneur and innovator whose sense of what is “possible or impossible” appears virtually limitless, much like his creative flow, which he attributes to a deep connection with the spiritual realm.

Shaped by his personal life journey, he began taking responsibility for his own path at the age of 14. Since then, he has built a broad and diverse foundation of expertise, accumulating an exceptional range of experience across multiple industries - both in depth and breadth.

Among close friends, he is often described as a bridge-builder toward a “**New World of Love**” as he deeply understands the mechanisms of the existing world through knowledge and experience, while remaining fully aligned in action and intention with a forward-looking vision of a more loving future.

Ralf Dickscheid has long recognized that a fundamental shift in thinking, behavior, and collaboration is required to create lasting, meaningful change in the world. He stands ready to dedicate his full potential in service of humanity.





FOUNDATION

inviva

SOURCE OF LIGHT



The VALUES

we LIVE by...

Our character ...

Qualities



We are a group of motivated, value-driven individuals with extensive expertise and capabilities, focused on restoring balance in living spaces and quality of life for people, animals, and plants through sustainable, positive impact, always with an awareness of the universal interconnectedness of all things.



We bring both experience and intuition to the table, enabling us to develop, take over, and restructure projects in alignment with the natural universal principle of growth and evolution - even when the challenges are complex and demanding.



We operate strictly in alignment with social, moral, and spiritual values, guided by the principles of a new world rooted in love and the creative wisdom of the feminine. Our focus is always on embodying love and joy and bringing them into the world.



What we commit to... Qualities



Truth and clarity, as well as transparency in our path and in everything we do.



We are driven to give our very best and to improve a little every day. Not out of obligation, but because it brings us joy to walk the path of our purpose and help build a new world rooted in love.



Intelligent, sustainable values are created to last across generations. The values brought into the world through INVIVA are intended for humanity as a whole, as INVIVA represents a creative source for the new world of love.



A heart-shaped Earth from space, showing continents and oceans, set against a dark blue background. The Earth is rendered with realistic colors and textures, including clouds and landmasses. The heart shape is formed by the Earth's curvature, with the top and bottom points of the heart being the poles.

The CORE CHALLENGES
that need to be addressed...

Human **separation** can be observed across nearly all areas of life, with many of its lingering effects from past darker eras still clearly visible in 2026.

This reality, along with the reduction of the feminine primal force, the family structure, and ultimately authentic love to a minimum, **calls for profound and meaningful change.**

The **concept of universal human consciousness** is framed here in relation to three key aspects of the human body: the pituitary gland, the cells, and the so-called fifth chamber of the heart.

Various external influences, including nutrition, water quality, media, radiation, and others, are described as limiting access to these levels of awareness. Sustainable transformation of the world is only seen as possible when human consciousness is expanded and opened. As a result, **interconnected, system-based approaches** are required to address this complex challenge.

True and unconditional love is aligned with our essential, original nature. In this sense, light and love are described as the most powerful energies in the universe.

Modern societies, particularly in industrialized nations, are portrayed as being centered around performance, consumption, and limiting belief systems, while poverty and hunger in developing regions further pull collective awareness away from love.

Since energy follows attention, a fundamental shift back to our original state - love - is seen as essential. Within this perspective, nothing appears more important than the emergence of a **“New World of Love”**



FOUNDATION

INVIVA

SOURCE OF LIGHT

Origin and Meaning of the Name:

IN : = Intelligent

VI : = Vitality

VA : = Value

IN : = in the sense of being alive

VIVA : = life



FOUNDATION

inviva

SOURCE OF LIGHT

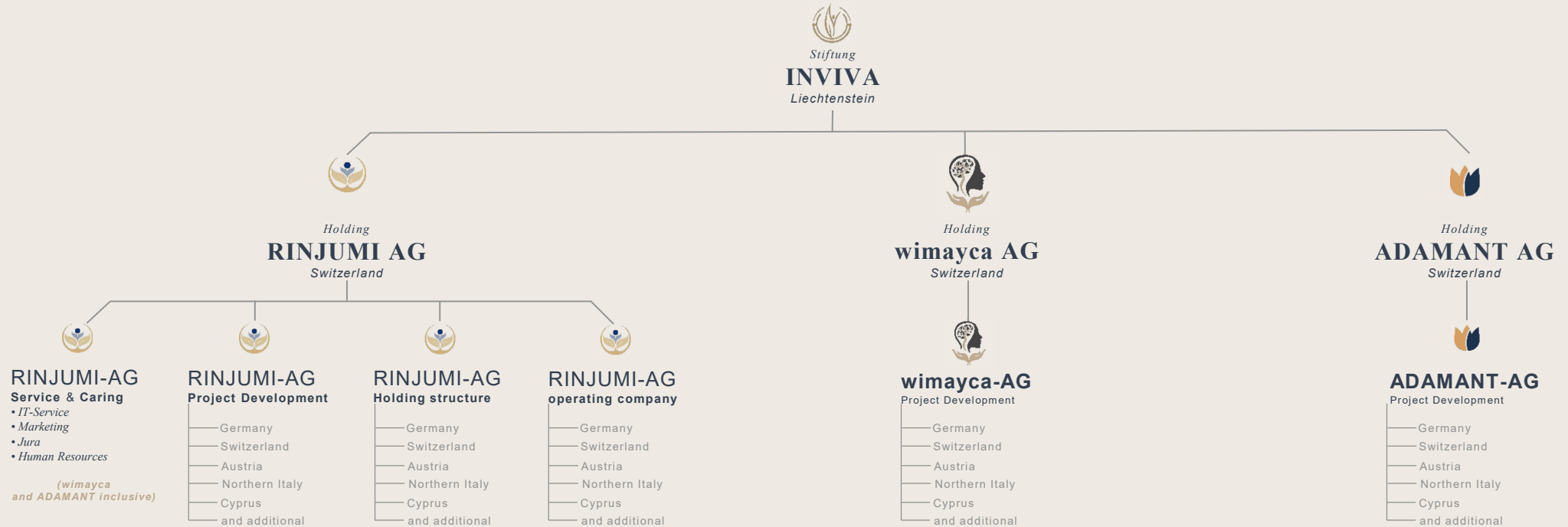
Origin and Meaning of the Logo:

The logo symbolizes Mother Earth opening up as humanity reconnects with nature, allowing its original essence and deeper sense of self to take the lead once again...





STRUCTURE
FOUNDATION...



The corporate structure is designed to ensure feasibility within the practical, physical world. However, in day-to-day operations and decision-making, each company is guided and built in alignment with the principles of the “New World of Love” - with particular emphasis on the people who contribute to this vision, regardless of their specific role or function in the process of building it.



FOUNDATION

inviva

SOURCE OF LIGHT

Vision Humanitarian

All our projects are created from a place of deep sincerity, compassion, and a genuinely open heart.

The process of bringing ideas into material form is guided by creative and innovative expertise, carried by a sense of higher purpose and generative force.

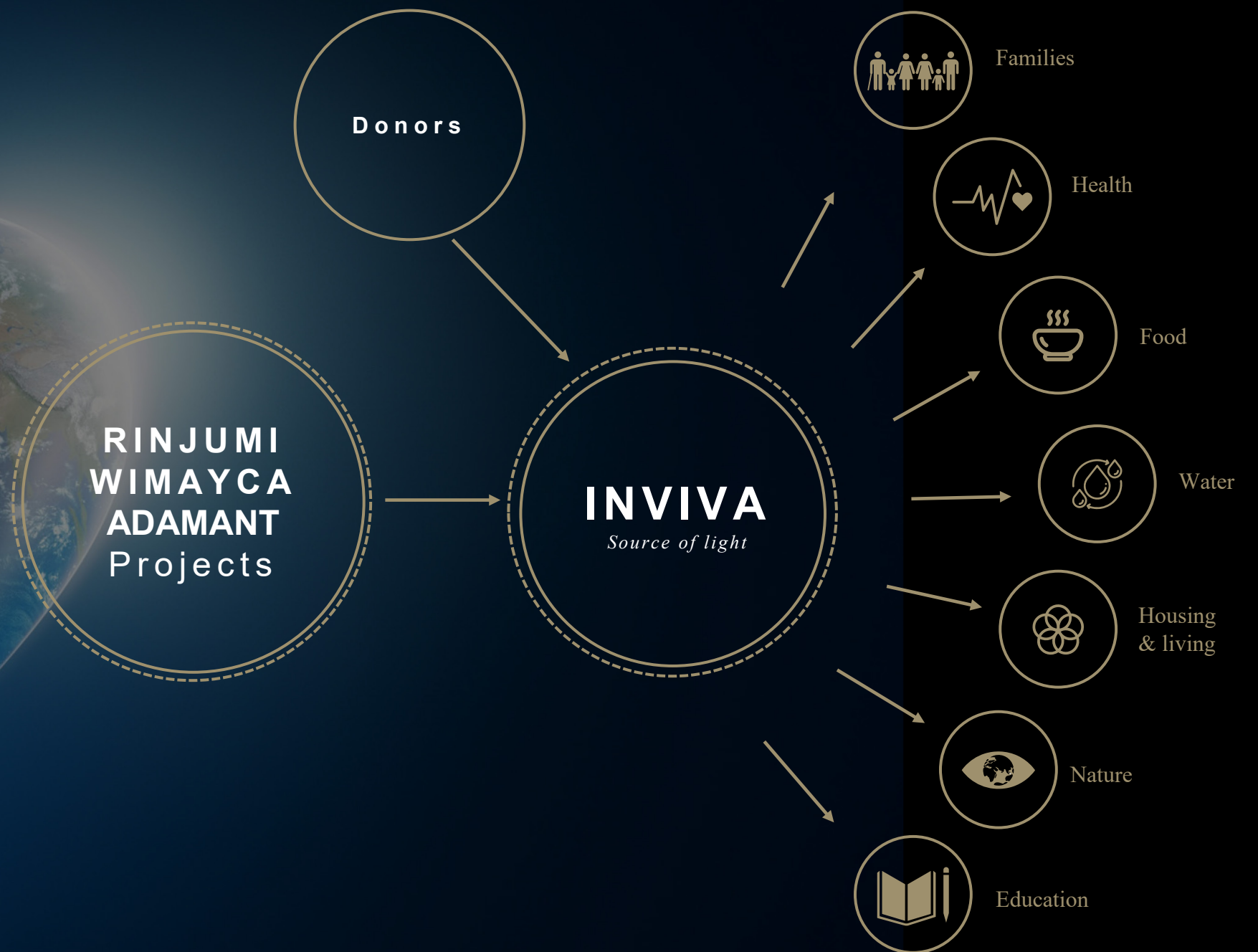
Profits generated through operational subsidiaries of xxx will be allocated as follows: 50% will flow into INVIVA, along with 100% of any additional funds received directly by the foundation's founder.

Our support is grounded in a deeper principle:

empowerment through self-sufficiency. Not rescue, but

amends

this is the driving force behind
INVIVA...



Meaning of the Foundation:

„**INVIVA**“ as a foundation carrying the addition “**Source of Light**” - understood equally as a “**Source of Love**” - is intended to represent a sacred source. In this context, it is essential to understand the deeper meaning behind the words “**holy**” and “**source**.”

INVIVA clearly distances itself from religions, sects, or any organizations that do not place the well-being of all people, animals, and Mother Earth at the focus of their mission.

The term “**holy**” is understood by **INVIVA** through its original linguistic root connected to “**healing**”. As such, **INVIVA** is deeply committed to supporting healing for all living beings and for the Earth itself. On every level: physical, mental, emotional, spiritual, and material.

The word “**source**” is seen as a reflection of the belief that everything created through **INVIVA** should emerge from a deep understanding of natural interconnectedness, guided by love and joy.

Created by people, for people - as well as for animals and Mother Earth!

Core Philosophy of the Foundation:

All projects brought into the world through INVIVA and its operating channels (RINJUMI; WIMAYCA; ADAMANT) are rooted in a complete and authentic understanding of the name „INVIVA“.

- IN** = **In**_telligence represents the masculine principle, the mind and the power to create.
- VI** = **Vi**_tality represents the feminine principle - the heart, vitality, and the nurturing creative force.
- VA** = **Va**_lue represents true spiritual values.

It is a clear message that the „**VI**“ as a symbol of the feminine, stands at the center of the word „**INVIVA**“. The **CENTER** represents the **creative force** and the all-encompassing, unconditional love, the **mother soil** from which everything brought into the New World of Love through **INVIVA** can grow and emerge!

INVIVA is neither a tax-driven model nor a traditional charitable foundation - approaches often associated with a rescue mentality and a mindset rooted in scarcity. Instead, **INVIVA** is a foundation dedicated to **helping build a New World of Love...**

*„...through the **intentional redistribution of excess and non-essential wealth.**“*



PROJECTS

for the Future...

Core Principle for Foundation Projects:

An initial focus of **INVIVA** is on projects that support the expansion of consciousness and deepen awareness of what the world urgently needs today.

INVIVA serves as a platform for inspired and innovative peacemakers, healers, visionaries, creators, and purpose-driven initiatives aligned with the principle of interconnectedness. In this way, **INVIVA** becomes an **important foundation** for building a **New World of Love**.

For many **INVIVA-Projects**, financial returns and business optimization are not the primary drivers. At the same time, all entrusted assets are managed with responsibility, integrity, and long-term care.

Historically, most projects have been guided by conventional business principles focused on achieving maximum return with minimal effort, a logic that also forms the foundation of shareholder value thinking. Over time, this framework has contributed to a growing imbalance in wealth distribution.

There is now an urgent need for a conscious reassessment and a responsible return of non-essential assets into society. This is only possible when individuals with significant wealth find the courage and clarity to recognize this reality and choose to contribute part of their surplus capital as **a personal statement, a living legacy in support of a necessary turning point.**

Over the past years, together with international partners and networks, we have developed forward-looking projects and concepts that are **essential for building a New World of Love and for addressing both current and emerging challenges.**

We are prepared, within the context of a redistribution of resources, to dedicate the remainder of our lives to this mission in love and joy, so that children and future generations may once again experience a **planet of love, joy, and prosperity,** aligned with the universal **principle of abundance.**

The New World of Love is not an esoteric project or merely an idea. Rather, this expression reflects the understanding that unconditional, **authentic love** represents the highest frequency in the universe.

The key challenge lies in humanity's need to evolve toward a higher frequency state, as described in quantum physics perspectives, so that the natural consciousness within us becomes accessible again. In this state, many destructive patterns such as greed, power seeking, envy, and fear are naturally replaced by joy, contentment, trust, courage, and humanity.

For this reason, alongside the development of essential infrastructure and operational projects for the New World of Love, **it is crucial to focus on three core pillars:**

1. Support for all forms of consciousness development, including mental clarity, physical movement, spiritual connection, and self awareness
2. Healthy nutrition free from toxins and harmful substances, with high energetic quality
3. A fundamental shift in media consumption, including television, mobile devices, social media, and mass events

Only through strong and consistent support of these three core pillars can humanity begin to understand true interdependence. Only then becomes an intrinsic and respectful relationship with fellow humans, animals, and nature possible again.

A heart-shaped globe of Earth is centered on the Atlantic Ocean, showing the Americas on the left and Europe and Africa on the right. The globe is set against a dark blue background with a subtle light flare behind it. The text 'PROJECTS' and 'KEY INFORMATION...' is overlaid in white, serif font.

PROJECTS

KEY INFORMATION...

The Challenge:

It is unrealistic to assume that a “**New World of Love**” can emerge without **building a bridge from the old world**.

In practical terms, this bridge represents a complex, multi layered challenge, illustrated by the following key points:

- In the first two to three years, the starting point of all projects is the existing system, while introducing innovative and future oriented structures
- Projects aligned with the New World of Love, such as nonprofit initiatives, must be designed in a way that allows them to operate within existing legal, tax, and regulatory frameworks
- Key roles within these projects should primarily be filled by conscious and aware individuals, enabling broader teams to grow into this essential mindset over time

Project Transformation I:

Projects in the old world have traditionally been planned in a highly structured and standardized way, based on defined frameworks such as:

- Planning including visualizations and 3D models
- Due diligence, unique selling propositions, track record, and feasibility studies
- Business plan scenarios including worst case, mid case, best case, and cash flow projections
- and similar analytical methods

In execution, however, priorities often shifted toward factors such as:

- Time efficiency, often without sufficient regard for people and nature
- Strict controlling mechanisms
- Profit and return over quality and human well being
- and related performance driven objectives

Projects in the New World of Love are instead built on **joy, love, and trust**. Time is understood as something that follows a **natural rhythm**, with a focus on **responsible action** and a **balanced use of resources**.

Project Transformation II:

All projects funded and supported by **INVIVA**, whether directly or through a foundation-owned company, must meet the principles of wholeness and ensure long-term sustainability. It is therefore essential that every project operates in alignment with love, joy, clarity, truth, and a healthy economic balance.

This economic balance can be understood from multiple perspectives. Non profit projects are, by definition, financially loss making, but when supported by highly profitable ventures, both sides can be brought into balance through cross subsidization in a simplified view.

When projects are presented to the **INVIVA** network, they are categorized as follows:

1. Suitable for adoption, as they are holistic and sustainable and aligned with the New World of Love
2. Of interest, but requiring adaptation for various reasons
3. Not suitable for adoption, as they do not meet holistic or sustainable criteria

Projects in category 2 are transformed in a way that preserves their original intention as much as possible while bringing them into alignment with the overall framework.

Projects by prioritization:

Nach Marke & Gruppe			Nach New World Priorität (5D)			Nach Umsatz und Rendite (3D)		
1	RINJUMI	RINJUMI vitality CLINIC 4s	1	RINJUMI	Non Profit Projects	1	RINJUMI	Multi Element
2	RINJUMI	Therapie Oasen	2	ADAMANT	Awarness Academy	2	RINJUMI	Sano Vita
3	RINJUMI	Start-Up Campus	3	WIMAYCA	Feminin Oasis	3	RINJUMI	Sano Terra
4	RINJUMI	Non Profit Projects	4	RINJUMI	Therapie Oasen	4	RINJUMI	RINJUMI vitality CLINIC 4s
5	RINJUMI	Multi Element	5	WIMAYCA	Kids Campus	5	RINJUMI	Therapie Oasen
6	RINJUMI	Clean Water	6	ADAMANT	Junior Campus	6	RINJUMI	Aqua Ponie
7	RINJUMI	Aqua Ponie	7	WIMAYCA	Maskulin Campus	7	RINJUMI	Clean Water
8	RINJUMI	Sano Vita	8	WIMAYCA	Couples Campus	8	WIMAYCA	Feminin Oasis
9	RINJUMI	Sano Terra	9	RINJUMI	RINJUMI vitality CLINIC 4s	9	WIMAYCA	Maskulin Campus
10	WIMAYCA	Feminin Oasis	10	RINJUMI	Clean Water	10	WIMAYCA	Couples Campus
11	WIMAYCA	Maskulin Campus	11	RINJUMI	Aqua Ponie	11	WIMAYCA	Kids Campus
12	WIMAYCA	Couples Campus	12	RINJUMI	Multi Element	12	ADAMANT	Junior Campus
13	WIMAYCA	Kids Campus	13	RINJUMI	Sano Vita	13	RINJUMI	Start-Up Campus
14	ADAMANT	Junior Campus	14	RINJUMI	Sano Terra	14	ADAMANT	Start-Up Campus
15	ADAMANT	Start-Up Campus	15	RINJUMI	Start-Up Campus	15	ADAMANT	Awarness Academy
16	ADAMANT	Awarness Academy	16	ADAMANT	Start-Up Campus	16	RINJUMI	Non Profit Projects

The projects listed represent the intended initial launch projects from a general perspective, as a more detailed view would reveal additional subprojects and layers.

This overview is meant to illustrate how significantly priorities can shift when the order of importance is changed.

It becomes clear that prioritization within a purely 3D framework is almost entirely contrary to the principles of the New World of Love.

3D represents „old world“
5D represents "New World of Love"

Wealth Redistribution I:

Money in its current form as fiat currency is one of the most powerful and at the same time most influential energetic systems on this planet. The negative manifestations associated with money, such as power imbalances, greed, war, and corruption, **must no longer be accepted**.

Since the New World of Love first needs to be built while still coexisting on the same planet as the old world, it is essential to act with a high level of responsibility. Any entrusted assets must therefore be managed in accordance with the foundation's principles of wholeness and sustainability.

In simple terms, from a polarity perspective, money has two aspects:

1. The dark side, associated with power, greed, war, and corruption
2. The light side, associated with life energy, joy, prosperity, and well being

INVIVA will exclusively use and invest entrusted assets in alignment with the light side, as these resources are regarded as a form of living **legacy entrusted** by individuals and institutions.

Wealth Redistribution II:

History shows that there have always been individuals deeply committed to humanity who have made a lasting impact on the world.

INVIVA is a large-scale initiative designed to leave a **meaningful legacy** for those who are ready to step forward with courage and contribute to this **New World of Love**.

Every pioneer knows how demanding the path of early adoption can be.

The journey becomes easier and more natural when people walk it together, united in courage, motivation, generosity, and confidence in their own convictions.

A heart-shaped globe of the Earth is centered on the Atlantic Ocean, showing the Americas on the left and Europe and Africa on the right. The globe is set against a dark blue background with a bright light source behind it, creating a glow. Overlaid on the globe is the text "The INITIAL REGIONS" in a white, serif font.

The INITIAL REGIONS

For the projects...

Why the initial focus is on the German speaking region:

The planned launch projects are located almost entirely within the German speaking region. with the exception of Cyprus and Northern Italy. Projects located outside this region (*Cyprus and northern Italy*) serve primarily to

„raising consciousness toward a New World of Love“

In recent years, Europe, and in particular Germany, Austria, and Switzerland, has increasingly been shaped by geopolitical influences and systemic frameworks characterized by cost pressure, bureaucracy, regulation, various forms of separation, as well as concerns related to food systems and media narratives. As a result, overall progress and prosperity have been significantly constrained.

This development is not viewed as coincidental, as these regions also hold a high concentration of visionaries and creators whose potential has so far remained largely underutilized.

By initiating projects in these core regions, it becomes possible to implement creative and unconventional solutions within a relatively short time frame, thereby significantly elevating awareness and laying the foundation for a **New World of Love**.



PROJECTS

we stand for...



RINJUMI



RINJUMI

Origin and Meaning of the Name:

Ri : = re
nju : = new
mi : = me



Origin of the Meaningful Logo:



- Vision**
Open and creating connection to the higher realm
- Core**
Natural, human, empathetic
- Commitment in the sense of "promise"**
To live in a more vital, conscious, and joyful way, rooted in love.
- Character**
Holistic, impactful, and inspiring.
- Position**
Unique, consistent, and impactful integrative concepts, grounded in values and guided by a spiritual foundation.



Meaning of RINJUMI:

On the one hand, the name „**RINJUMI**“ represents **a withdrawal from today’s media driven societal overload**, a form of **DETOXING** for the **SOUL**. On the other hand, it also stands for everything required to lovingly and sustainably build a new world.

This begins with how we welcome children into life on Mother Earth and continues with how we support these pure souls through caring guidance, helping them fulfil their natural, joyful purpose, free from limiting systems.

It is not the children who are our future, but **rather we**, the generation of parents and grandparents, **who shape the future for them through** what we create and provide today.

Another key focus lies in living environments and our relationship with animals, including their natural capacity to support human healing.

Mother Earth herself will also receive meaningful support in the restoration of degraded soils and the preservation of biodiversity.





he separation of the feminine and masculine, both internally and externally, the fragmentation of families, the isolation of older people from society through institutional care, and the division of cultures in many different forms represent another core issue addressed by the **RINJUMI CONCEPT**, as these areas also require urgent transformation.

We hold the view that there are no single rooms in heaven, as human beings in their natural and loving form are fundamentally social beings.

When genuine values such as the following are lived within a family, a community, or a workplace:

- Love
- Joy
- Respect
- Recognition and appreciation
- Gratitude

the respective community becomes an amplifier of energy.

RINJUMI is a “**WE CONCEPT**“ with a strong focus on **renewal and humanity**.





Projects by RINJUMI:

„RINJUMI“ represents projects created from the heart, by people for people, while taking into account all elements of existence, including Mother Earth, living beings, animals, and natural habitats. Love, joy, health, and overall well being are among the core parameters that form the foundation of every project.

„RINJUMI“ is structured into four main areas:

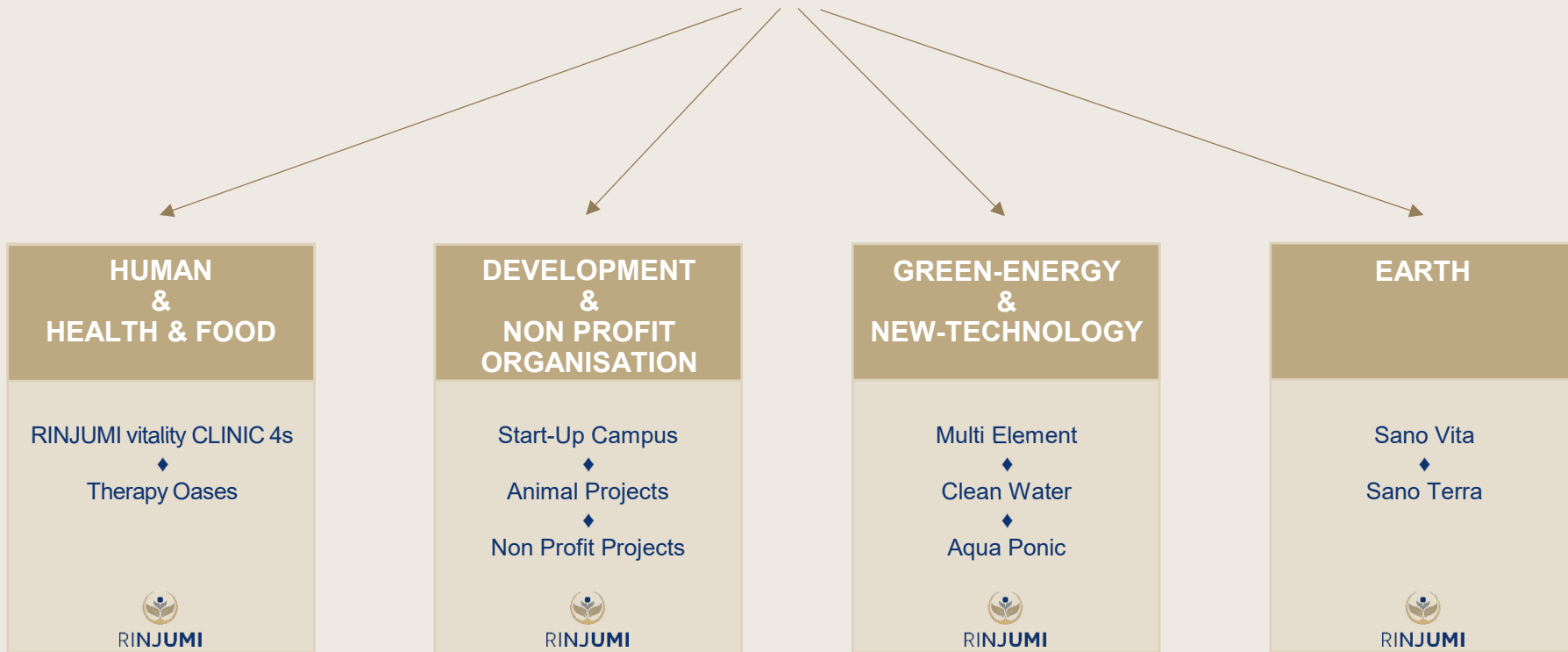
- ✓ **HUMAN & HEALTH & FOOD**
- ✓ **GREEN-ENERGY & NEW-TECHNOLOGY**
- ✓ **DEVELOPMENT & NON-PROFIT ORGANISATION**
- ✓ **EARTH**

All of the above areas reflect the principle of natural interdependence and are aligned with the ancient Mayan understanding, which plays a guiding role across all domains.

"In our every deliberation, we must consider the impact of our decisions on the next seven generations."

(Ancient Mayan principle)







w i m a y c a

Empower your real, spiritual feminine...



w i m a y c a

Origin and Meaning of the Name:

wi	: = I will
may	: = I may
ca	: = I can



Origin of the Meaningful Logo:



Vision

The mind is guided by the intuitive, pure, and loving heart.

Core

The creative force of the feminine

Character

Unconditional love

Position

The hands of pure femininity
cleansed, loving, nurturing, and connected...



w i m a y c a

Meaning of WIMAYCA:

The Earth is naturally connected to our human existence and essence. From this perspective, we are loving beings with an intrinsic soul force that nourishes, supports, and fills us with wisdom throughout our lives.

When life becomes overly focused on the external world, this connection to our original source can be lost. We begin to feel separated, powerless, and without inner guidance.

WIMAYCA is a path dedicated to guiding women back into their feminine core strength and authentic, original femininity, expressed in the sense of **“EMPOWER YOUR FEMININE.”**

WIMAYCA is based on the philosophy and intention of leading women back into the pure magic of self love, thereby reopening the door to lived, unconditional love.

„If love prevails on Earth, all laws will become unnecessary.“
(Aristoteles)





wimayca

The concept of WIMAYCA:

The „**WIMAYCA CONCEPT**“ emerged from the belief that today’s world in 2026 more than ever requires the reactivation of the feminine core force of unconditional love as a guiding principle.

The feminine, understood as the loving and creative force, energetically guides the masculine in the creation of new living spaces and sustainable projects, enabling humanity to return to its natural state of interdependence and to transform the world **into a world of love**.

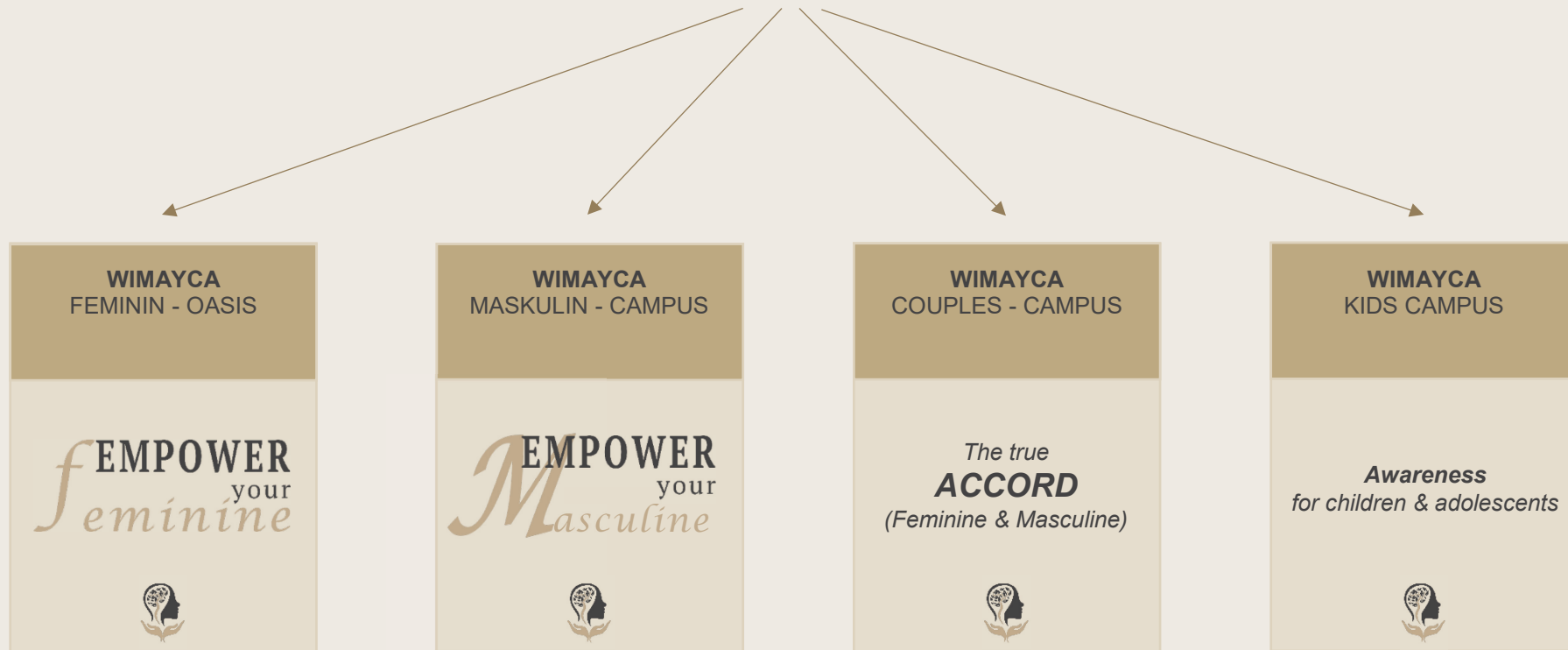
Moving away from concepts such as “feminism” and perceived independence, the „**WIMAYCA CONCEPT**“ concept supports women in rediscovering who they truly are, why they are here, and how to activate their inner **power by reconnecting with the nurturing principle**.

At the same time, the „**WIMAYCA CONCEPT**“ also helps men understand the true nature of masculine strength and how this form of power can be expressed in a respectful and honorable way, in contrast to patterns of patriarchy and narcissism.





wimayca



The active feminine
...as the fertile ground for a new world...





ADAMANT



ADAMANT

Origin and Meaning of the Name:

ADAM Kadmon : The original image of humanity, still carrying all natural values within.

Ad amant : It is about love. We love what we do.



Origin of the Meaningful Logo:



Interpretation 1

refers to a synonym for a process of regeneration. What has been divided is brought back together into a whole, with the aim of restoring harmony between body, mind, and soul; ESPECIALLY IN CHILDREN...

Interpretation 2

It symbolizes a shield. It conveys protection, safety, and a sense of security and comfort. In particular, children need this protection, as do people who have reached their limits due to sensory overload in modern society.

Interpretation 3

It symbolizes a process of blossoming. When body, mind, and soul are in harmony, we naturally come into our full strength and meet life again with lightness and the joy of a flower in bloom. (Joy is love in motion.)



Meaning of ADAMANT:

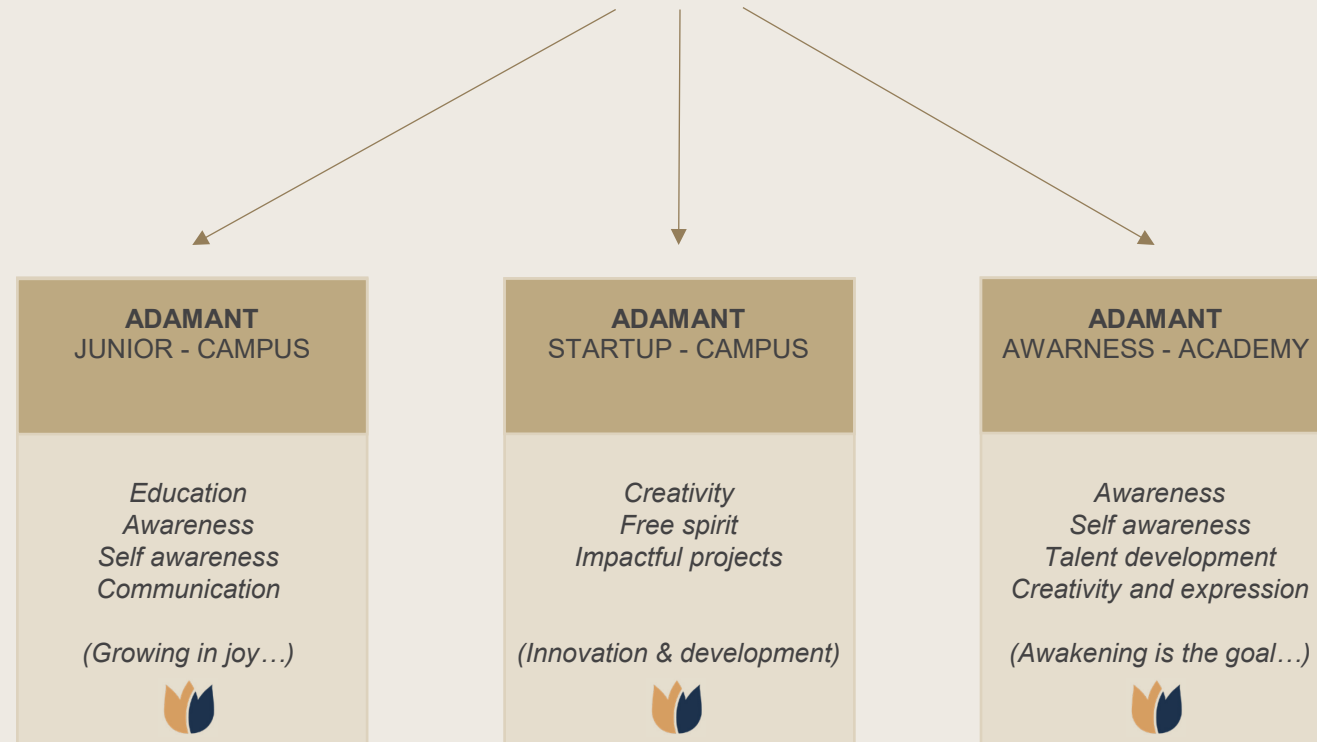
The focus of **ADAMANT** is clearly on **children and adolescents**, the future souls of the New World of Love.

While the **RINJUMI CONCEPT** also takes birth environments into account, **ADAMANT** is specifically designed to recognize and support the different developmental stages of children and young people in a targeted and meaningful way. This includes unique educational systems that have already been successfully tested in practice.

ADAMANT is based on the belief that all children inherently bring a high level of natural talent into the world, as well as the abilities their souls need for their individual purpose. In addition, children still possess many capacities that are often diminished in adults over time, such as heightened intuitive and perceptive abilities.

ADAMANT aims to rediscover and nurture these gifts and talents together with children in a playful and joyful way. **ADAMANT** strengthens the strengths of the next generation of society.





THE TRUE JOY OF INNER GROWTH...





FOUNDATION

inviva

SOURCE OF LIGHT



FOUNDATION

inviva

SOURCE OF LIGHT